



# Framesoc Code Review

**Generoso Pagano**

generoso.pagano@inria.fr

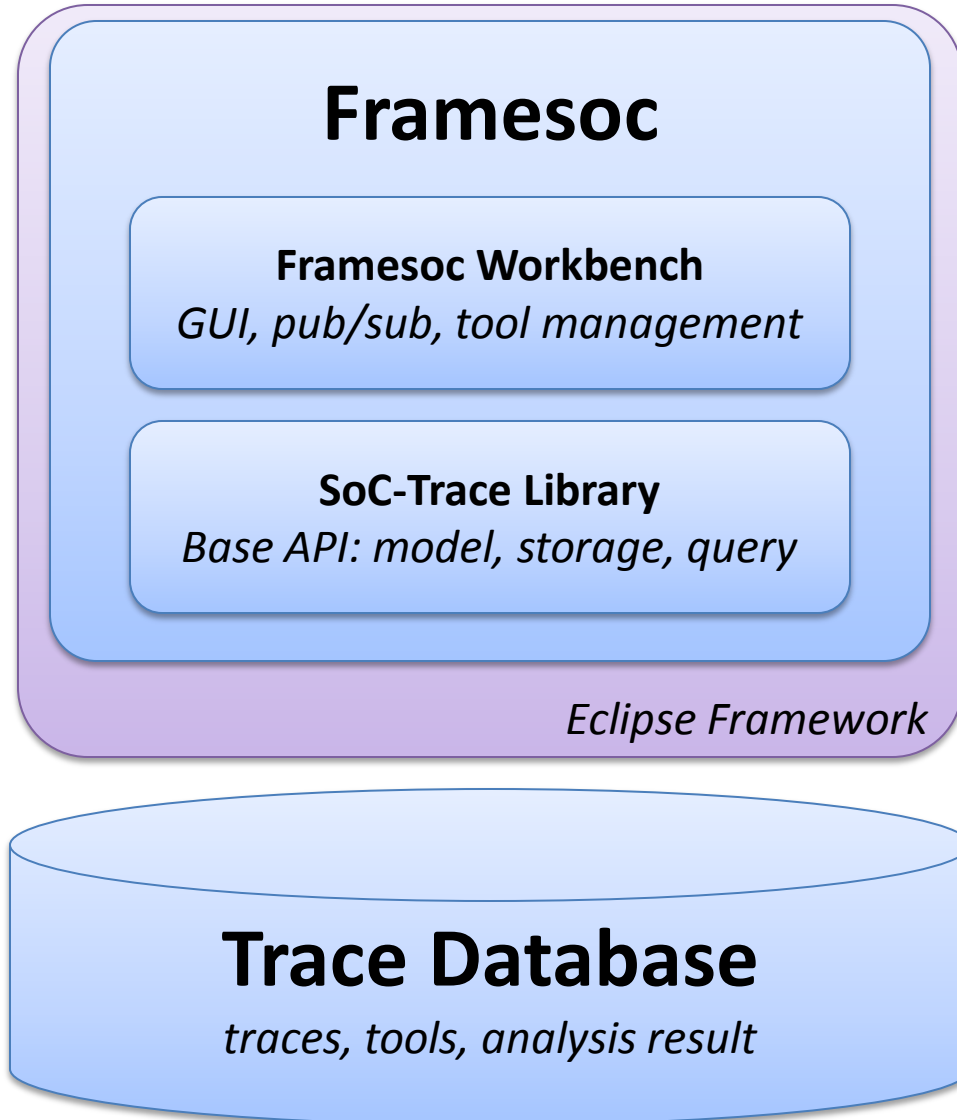
*Inria, 30/04/2015*

# Agenda

- **Framesoc overview**
  - General architecture
  - Eclipse framework
  - Database
- **Getting under the hood**
  - Getting the sources
  - Configuring a dev environment
  - Code structure

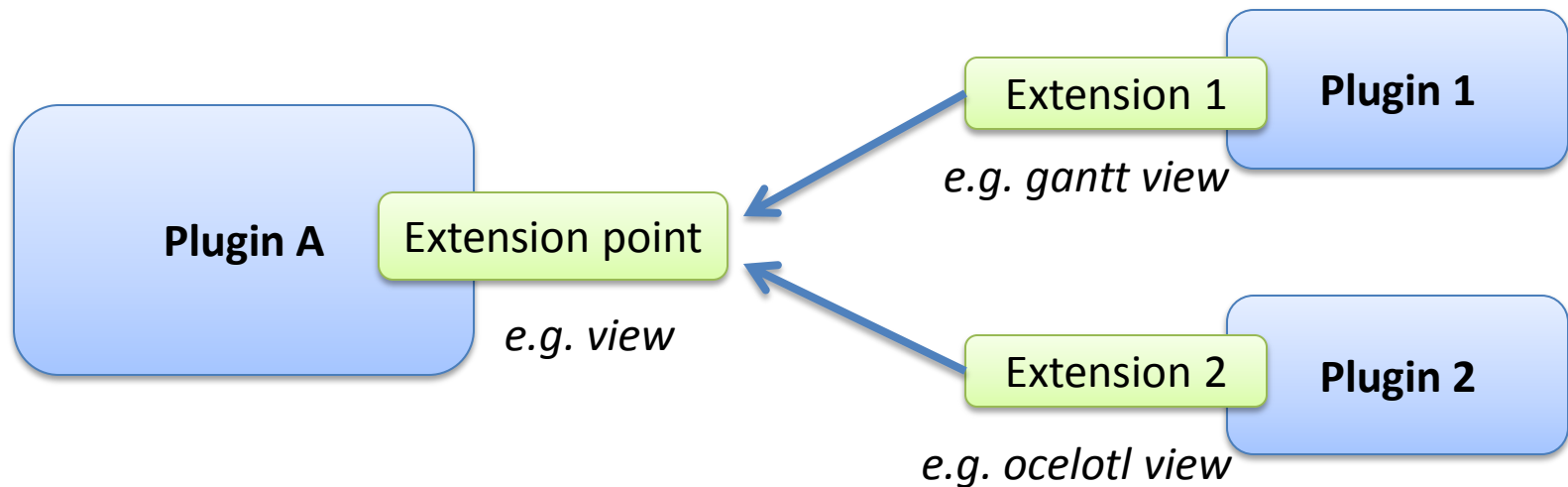
# Framesoc overview

# General Architecture



# Eclipse Framework

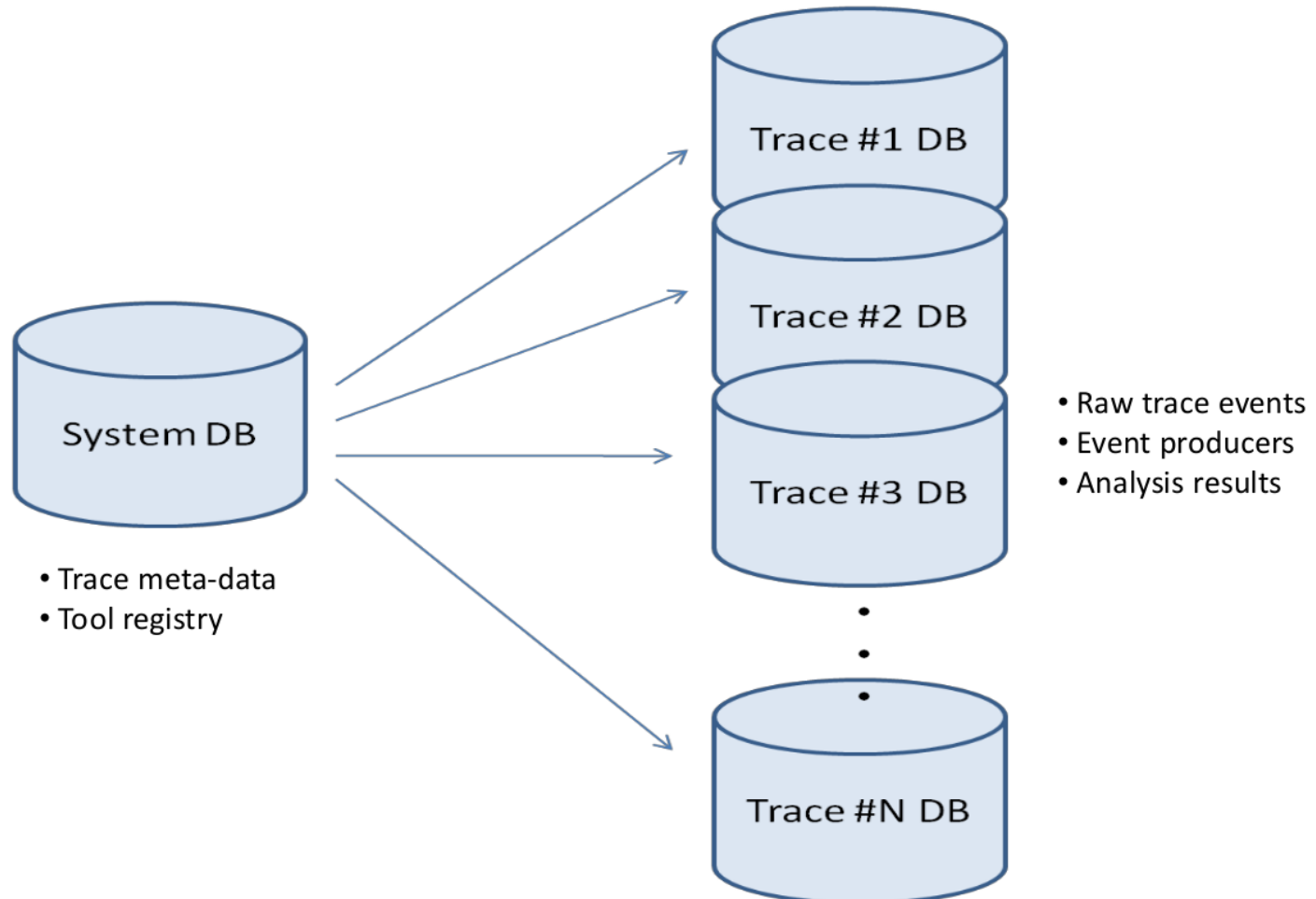
- Generic framework for developing applications:
  - Base core + plugins
- **Extensions/Extension points** mechanism [1]
  - Contribute functionalities to plug-ins by other plug-ins



[1] <http://www.vogella.com/tutorials/EclipseExtensionPoint/article.html>

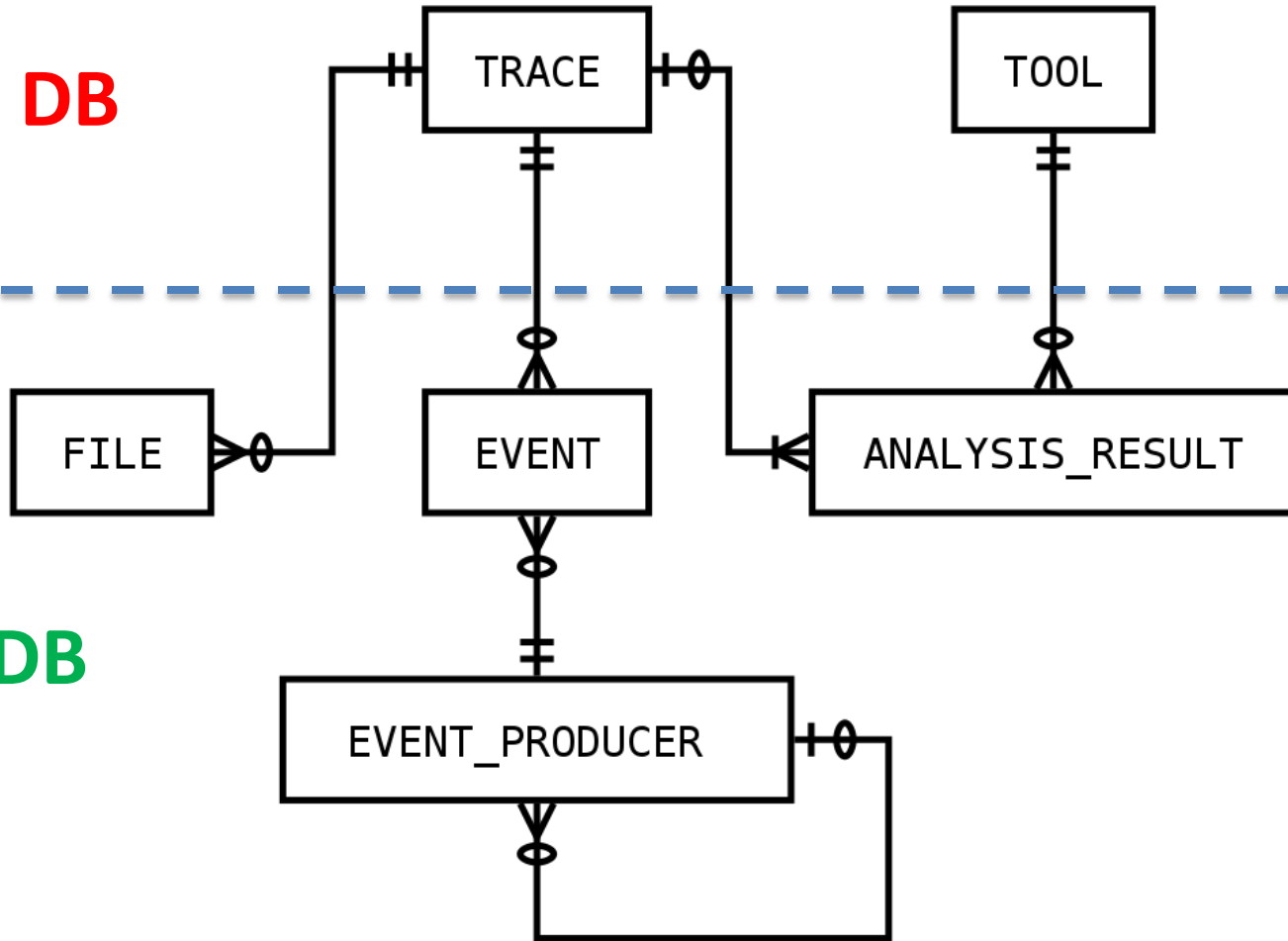
# Database: Architecture

- One central **System DB** and several **Trace DBs**.



# Database: Conceptual Diagram

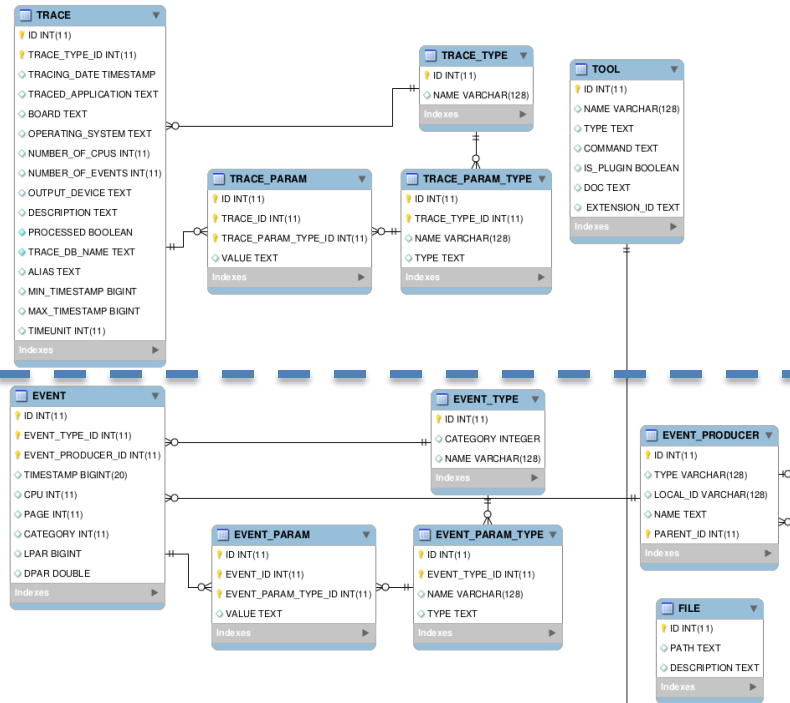
**System DB**



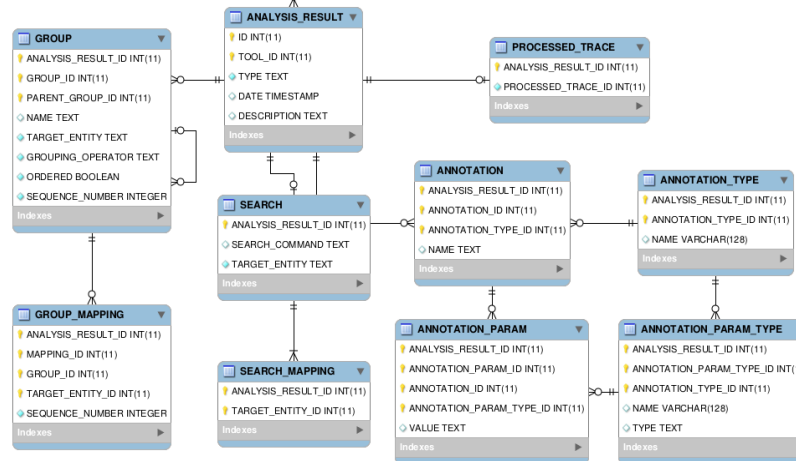
**Trace DB**

# Database: Relational Diagram

System DB

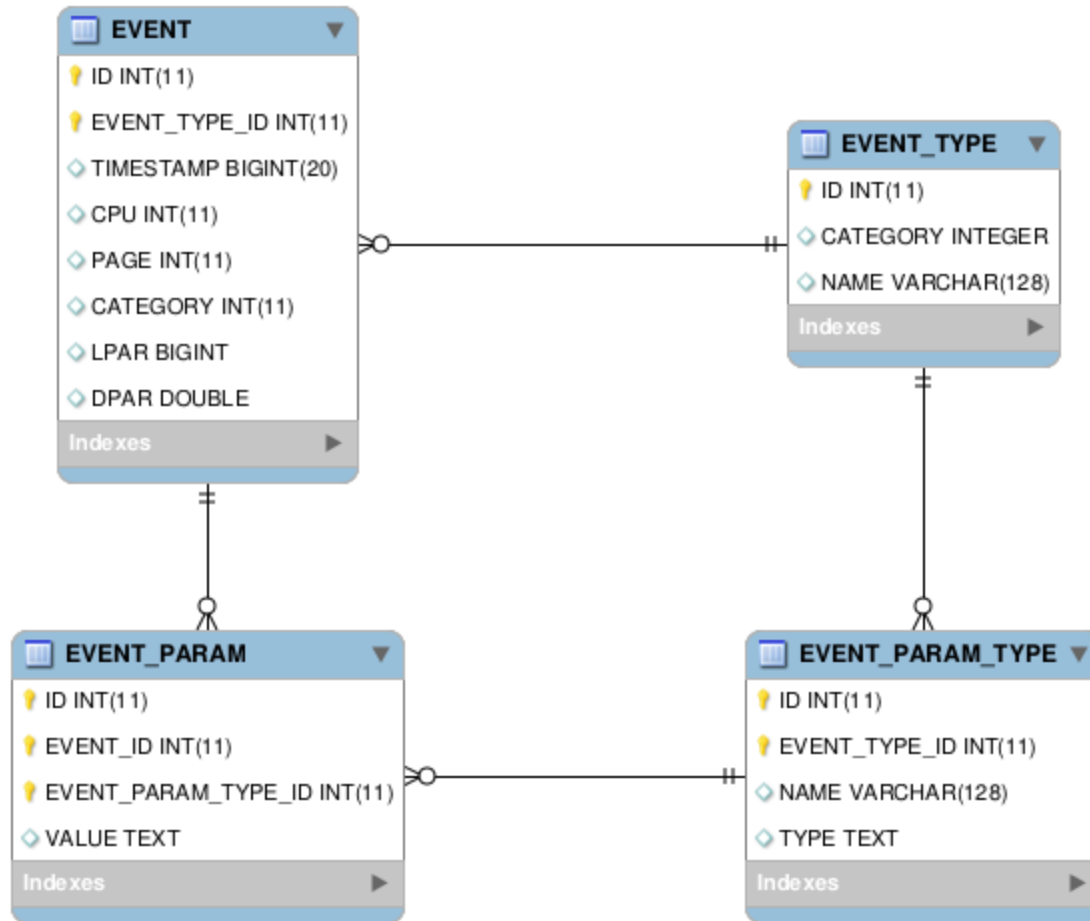


Trace DB

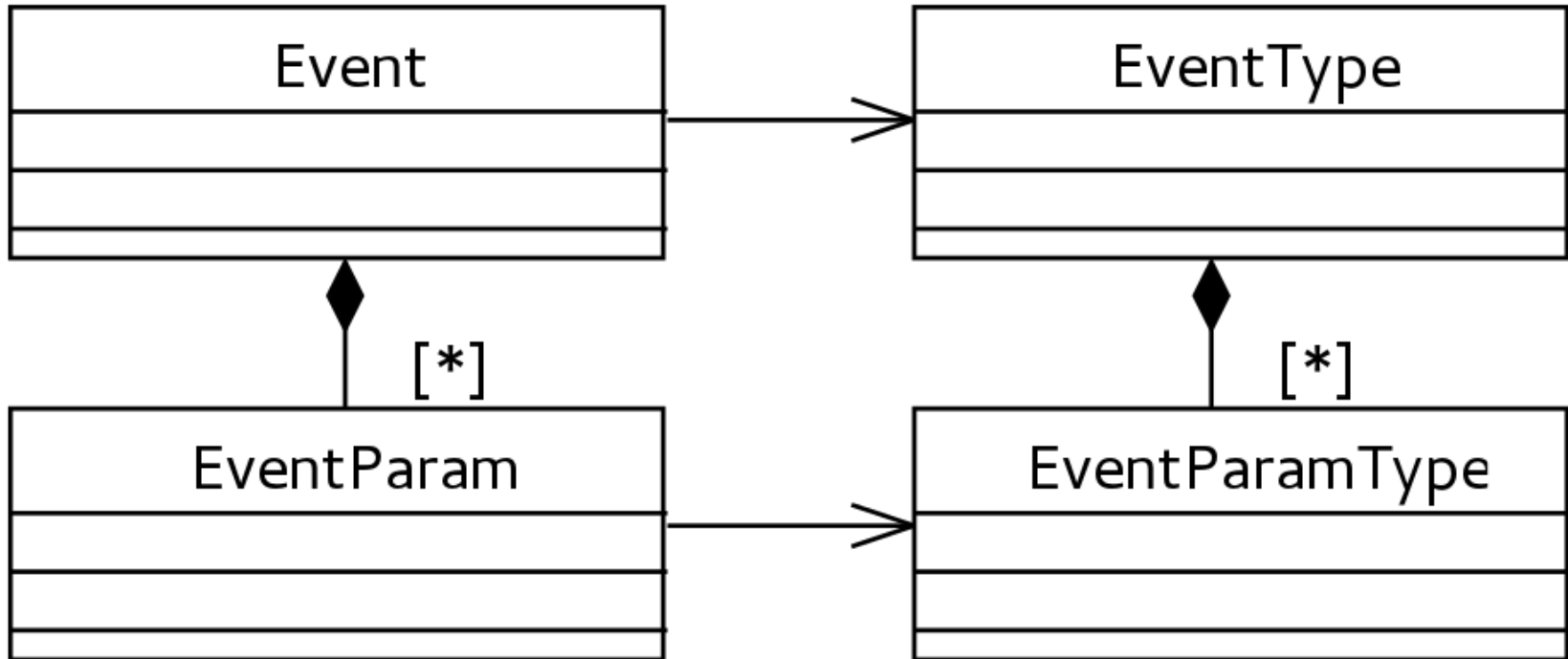




# Self-Defining Pattern: relational



# Self-Defining Pattern: classes



# Getting under the hood

# Getting the sources

- Code hosted on GitHub **soctrace-inria** organization
  - <https://github.com/soctrace-inria/>
- Repositories to clone:
  - **framesoc**
  - **framesoc.importers**

# Configuring a dev environment

- Follow the procedure described in the wiki
  - [Framesoc development environment setup](#)
- Checklist:
  - Be sure to have **Java 7**
  - Be sure to use a version of Eclipse  $\geq 4.3$ 
    - **version Luna 4.4.2 recommended**
  - Be sure to use **Eclipse for RCP and RAP Developers**
  - Be sure to install the **Tycho** m2e connector

# Framesoc code structure

- **SoC-Trace Library**
  - fr.inria.soctrace.lib.model
  - fr.inria.soctrace.lib.storage
  - fr.inria.soctrace.lib.query
  - fr.inria.soctrace.lib.search
  - fr.inria.soctrace.lib.utils
  - fr.inria.soctrace.lib.slf4j
- **Framesoc workbench**
  - fr.inria.soctrace.framesoc.core
  - fr.inria.soctrace.framesoc.ui
  - fr.inria.soctrace.framesoc.ui.eventtable
  - fr.inria.soctrace.framesoc.ui.gantt
  - fr.inria.soctrace.framesoc.ui.histogram
  - fr.inria.soctrace.framesoc.ui.piechart
- **Eclipse configuration plugins**
  - fr.inria.soctrace.maven.master
  - fr.inria.soctrace.maven.repository
  - fr.inria.soctrace.features.framesoc
  - fr.inria.soctrace.framesoc.brand
- **Others**
  - fr.inria.soctrace.test.junit
  - fr.inria.soctrace.tools.framesoc.exporter
- **Lttng plugins**
  - fr.inria.linuxtools.statesystem.core
  - fr.inria.linuxtools.tmf.core
  - fr.inria.linuxtools.tmf.ui

# Importers code structure

- **Importers**
  - fr.inria.soctrace.tools.importer.ctftrace
  - fr.inria.soctrace.tools.importer.gstreamer
  - fr.inria.soctrace.tools.importer.otf2
  - fr.inria.soctrace.tools.importer.paje
  - fr.inria.soctrace.tools.importer.pajedump
  - fr.inria.soctrace.tools.importer.paraver
  - fr.inria.soctrace.tools.importer.starpu
- **Eclipse configuration plugins**
  - fr.inria.soctrace.importers.maven.master
  - fr.inria.soctrace.importers.maven.repository
  - fr.inria.soctrace.features.importers
- **Lttng plugins**
  - fr.inria.linuxtools.ctf.core
  - fr.inria.linuxtools.ctf.parser
  - fr.inria.linuxtools.lttng2.kernel.core
  - fr.inria.linuxtools.tmf.ctf.core

# Useful links

- **Framesoc website**

<http://soctrace-inria.github.io/framesoc/>

- **Framesoc wiki**

<https://github.com/soctrace-inria/framesoc/wiki>

- **Eclipse plugin development tutorial**

<http://www.vogella.com/tutorials/EclipsePlugin/article.html>

- **Eclipse extension point tutorial**

<http://www.vogella.com/tutorials/EclipseExtensionPoint/article.html>



# Questions?

